




**FLARE
CAP**

FLARE GAS RECOVERY

www.flarecap.ca

**You've all seen them, driven
by them.**

You possibly wondered

WHY?!

**Followed
by**

**WHAT A
WASTE!**

UNTIL NOW



FLARE CAP

will work with you to



**convert waste
into profit.**

*All we need is a
Gas Analysis & Gas Volume*

Please follow us through an example:



Nitrogen

3.8%



Carbon Dioxide

2.14%



Hydrogen Sulfide

0.93%



Methane

59.94%



Ethane

15.11%



Propane

9.43%



Isobutane

1.28%



N-Butane

3.55%



Isopentane

0.91%



N-Pentane

1.01%



Hexane

0.78%



Heptane

1.07%



Water

0.0%



Helium

0.02%



Hydrogen

0.03%

1 MMSCFD gas rate
ambient **90°F**
elevation **2,100'**

**CARBON TAX
PLANNING**

COMPRESSION

Refrigeration/Process

Gas Sales to the
Mid Streamer

For sale to the
Utilities

NGL RECOVERY

For use within the
fence

**CONDENSATE
RECOVERY**

**POWER
GENERATION**

H₂S Removal

CO₂ Carbon
Capture
Sequestration



NGL RECOVERY

The previous gas analysis can support up to:

130.8 BBL per day

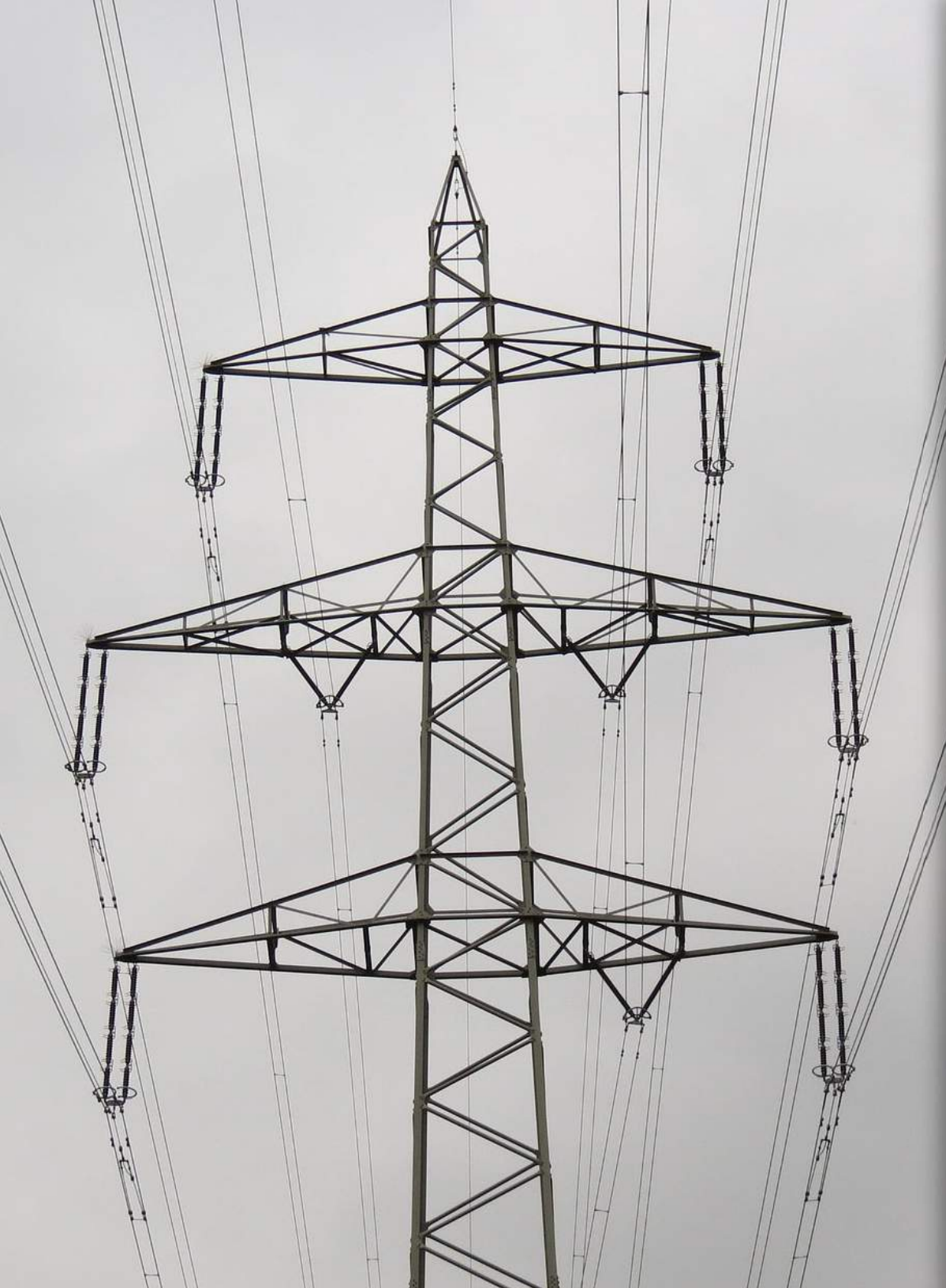
\$18.00 per BBL

\$2,354.40 per day
of NGL's

365 days

\$859,356 USD
annual revenue





POWER GENERATION

Approximately 880 MSCFD remain

880 MSCFD
300 MSCFD

-----> **2.9** MWH

24 HOURS per day

\$50.00 per hour

365 days

\$1,270,200 USD
annual revenue



GAS SALES (only)

$\frac{1 \text{ MMSCFD}}{1,000} \rightarrow 1,000 \text{ MSCFD}$

\$1.50 per MCF
365 days

\$547,500 USD
annual revenue (only)



CARBON TAX

(Canadian Model)

1 MMSCFD of gas =
~70,860 LB per day

~3 LB of carbon for every
1 LB of fuel

212,580 LB of
carbon per day =

96.6 TONNES

\$352,590
annual carbon dollar*

**based on the first year penalty rate*



Canadian Carbon Tax Penalties (per tonne)

Year 1: \$10.00

Year 2: \$20.00

Year 3: \$30.00

